

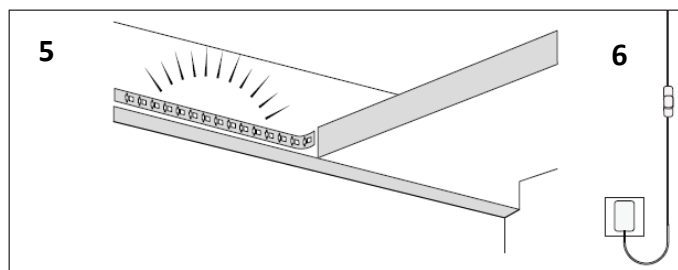
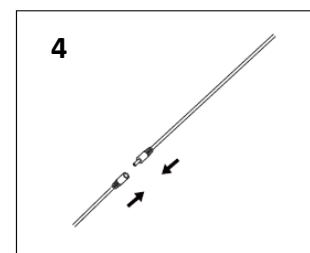
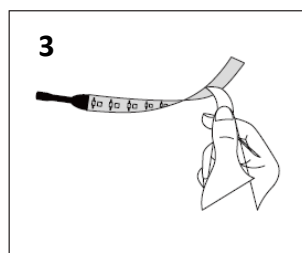
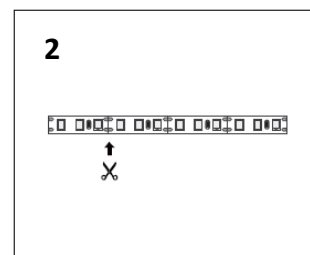
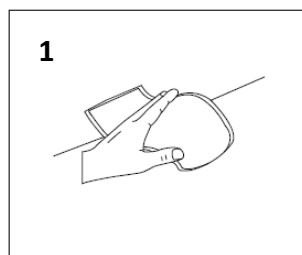
Thank you for purchasing our equipment. Please read this manual carefully and heed the safety warnings and instructions before installing, using or repairing the equipment. This will ensure not only the protection of persons, but also the long life of the equipment.

TECHNICAL PARAMETERS

Product code	WM59-WW	WM59-CW	WM59-NW
Power	AC 230V / DC 12V, 2500mA	AC 230V / DC 12V, 2500mA	AC 230V / DC 12V, 2500mA
Luminous flux	800lm/m	800lm/m	800lm/m
Power input	8W/m	8W/m	8W/m
Chromaticity temperature	3000K	6000K	4000K
IP coverage	IP20	IP20	IP20

INSTALLATION

1. Wipe the surface on which you will install the tape.
2. Measure and cut the desired length
3. Uncover the adhesive side of the tape
4. Connect the supply cable
5. Stick the tape on the surface
6. Connect the power cord to the plug



NOTICE

- If the device is damaged, do not use it.
- The belt can be shortened as needed.
- For maximum durability and performance, we recommend installing the strips in aluminium profiles.
- Do not expose the device to water or moisture.

At the end of its service life, the luminaire must be replaced in its entirety and disposed of in a designated place. This product contains a light source that for design reasons cannot be removed for verification and therefore the entire product is considered a light source. The power cord cannot be replaced if damaged, the unit must no longer be used.

The product has been issued with a CE declaration of conformity in accordance with the applicable regulations.
On request from the manufacturer: info@solight.cz, or downloadable from www.solight.cz/en.

